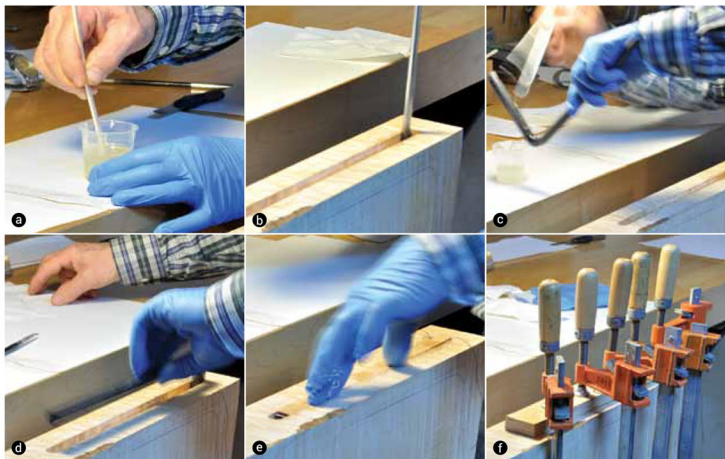




10 After making some adjustments at the turn of the beam, it is now ready for gluing. The maple fillet shown here is 2mm thick – 0.5mm higher than the block, which allows for clamping pressure. I use a hardwood board covered with clear packing tape for clamping.

Before step 11, I remove the beam from the block.



The gluing process

11 Gluing

I make a mixture of West System 105 epoxy resin and 206 hardener (11a). I brush epoxy generously into the hole and channel, pouring some in with the plastic beaker first (11b). Then I brush epoxy all over the beam (11c). I place the beam in the channel, pressing firmly and then cleaning excess epoxy as it oozes out. The nylon string can be seen under the beam; I have it there in case I need to lift it (11d). After brushing epoxy on the fillet, I place it on top of the beam, fixed towards the heel (11e). Finally I clean up excess epoxy and let it cure for 24 hours, using 4–5 clamps to keep it in place (11f). ●

NEXT MONTH
Michael Doran on bushing a cello endpin hole